

PRODUCT BRIEF

BRANDS : MF - AWS

SHEAR STUD

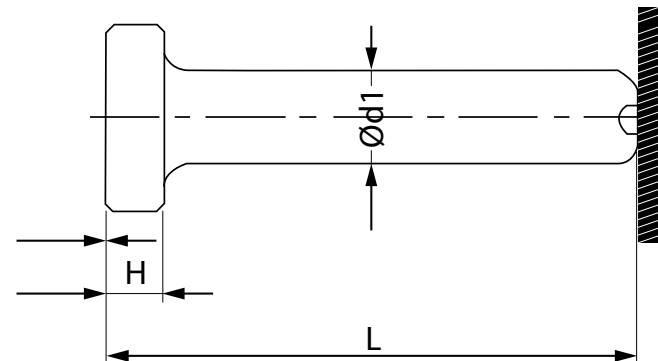
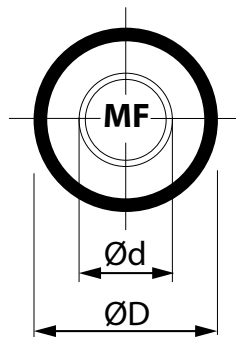
PRODUCTS DETAILS

All our products are produced in accordance with AWS D1.1 Type B, BS 5950, BS 5400 and ISO EN 13918. Our manufacturer's plant has also obtained (FPCC) Factory Production Control.

Multifixheaded shear connector studs are designed to tie the concrete slab to the steel beam and to resist shear loadings between the concrete slab and steel beam in composite construction.

Material Low Carbon Steel Cold Heading Wire Rod

d	13	16	19	22	25
D	24.6 - 25.4	31.6 - 32.4	31.6 - 32.4	34.6 - 35.4	40.6 - 41.4
H	7.1 - 7.6	7.1 - 7.6	9.5 - 10.0	9.5 - 10.0	12.7 - 13.2



MF Building & Construction Products Pte Ltd

39 Woodlands Close, #04-42 Mega @ Woodlands, Singapore 737856

Tel : +65 6877 0408 Fax : +65 6877 0456

Email : sales@mfbcp.com.sg Website : www.mfbcp.com.sg